



White Bear Lake Area Schools

2019-2020 Registration Guide

**Early Childhood Family
Education (ECFE)**

Infants, Toddlers, Preschoolers & Parents



Registration begins May 9
www.whitebear.ce.eleyo.com
 651-653-3100



Program Information

WELCOME

Early Childhood Family Education (ECFE)

ECFE offers classes for parents and their children ages birth to 5 years old (*before kindergarten*).

- ◆ Programs are designed for parents and their infants, toddlers, and preschool age children.
- ◆ Classes help strengthen family relationships and provide information and resources to parents.
- ◆ Programs strive to build a strong foundation for families by forming a partnership between home and school.

BIENVENIDO

Educación Infantil Familiar (ECFE)

ECFE ofrece clases a padres/madres/guardianes y a sus hijos de 0 a 5 años (antes del kindergarten)

- ◆ Los programas están diseñados para los padres y sus hijos/as en edad preescolar
- ◆ Las clases ayudan a fortalecer las relaciones familiares y a proveer información y recursos a los padres para ayudar a sus hijos a crecer y a desarrollar su potencial al máximo.
- ◆ Los programas ayudan a establecer una asociación fundamental entre la escuela y la familia.

ZOO SIAB TXAIS TOS

Kev kawm ntawv (ECFE)

ECFE muaj qhia ntawv rau cov niam txiv thiab cov menyuam mos yug los txog rau 5 xyos (ua ntej kawm ntawm qib kindergarten).

- ◆ Cov kev pab cuam yog tsim rau cov niam txiv thiab lawv cov menyuam mos, menyuam yau, thiab cov menyuam kawm preschool.
- ◆ Kev kawm ntawv yog pab kom muaj kev sib raug zoo rau tsev neeg thiab muaj lus qhia thiab kev pab rau cov niam txiv ntawm txoj kev pab txhawb lawv cov menyuam loj hlob.
- ◆ Muaj kev rau tsev neeg koom tes ntawm hauv tsev thiab lub tsev kawm ntawv.

Contact Us

Programs, Registration, Events & Class Openings
Main Office: 651-653-3100

Early Childhood Programs

Kate Andersen, Early Childhood Supervisor
651-653-3102
kate.andersen@isd624.org

Early Childhood Special Education

Angela Drange, EC Special Education Supervisor
651-653-3101
angela.drange@isd624.org

Early Childhood Sites

Each of the White Bear Lake Area Schools' Early Childhood program sites have unique areas that foster large muscle development and active play. Locations and codes for those school are listed below.

Hugo Elementary - HU

14895 Francesca Avenue, Hugo

Hugo's indoor and outdoor spaces accommodate preschoolers and early elementary grades.

Normandy Park - NP

2482 E County Road F East, White Bear Lake

Normandy Park has an indoor gym and outdoor playground designed especially for young children.

Tamarack Nature Center - TAM

5287 Otter Lake Road, White Bear Township

Tamarack Nature Center has a Nature Play Area and Discovery Garden with daily nature exploration activities.

Home Visits

ECFE Makes House Calls

Home visits are offered to families with children birth to age five (not yet in kindergarten). A licensed Family Educator will share information about community resources and talk about how children grow and develop, and how your child learns.

Call Tami at 651-653-3159 to schedule your free home visit.

Program Information

Early Childhood Screening

Screen at Three

Early Childhood Screening is **required** by the State of Minnesota for all children prior to entering kindergarten. White Bear Lake Area School District provides this screening at no charge.

3 reasons to screen at age 3

- ◆ Screening can ensure school success
- ◆ If health or developmental concerns are identified, educational services are available immediately
- ◆ It is fun for children and provides caregivers with valuable information regarding child development

Register online at

www.whitebear.ce.eleyo.com

or call 651-653-3100 to make an appointment.

Screenings are held at:

Normandy Park Education Center
2482 East County Road F, WBL

Early Childhood Special Education

Special education services are provided free of charge to children birth to age five. Children younger than three are generally seen at home by teachers and specialists. Call 651-653-3100 for more information.

Bear FUNdamentals

Year-round 4 year old program

Bear FUNdamentals is a full day program focused on providing engaging and enriching opportunities for learning and play that prepare children for kindergarten. This program can be combined with WBL Preschool courses and Extended Day to create a 6:30 am - 6 pm program.

Bear FUNdamentals focuses on children's emotional, social, physical and intellectual growth. Children work on listening skills, language and literacy, thinking and math skills, and social development through meaningful, interactive play. Content is based on Creative Curriculum. The program is staffed at a 1:10 ratio, taught by passionate instructors who encourage curiosity, discovery, and problem-solving in a stimulating, structured, and fun environment.

Students must be 4 years old by Oct. 1st. Choose from a variety of different contract options! Transportation is provided to and from with limited neighborhood stops.

Hours: Mon-Fri 9 am - 3:45 pm
extended hours available

Sites: Birch, Hugo, Lakeaires, and Otter Lake Schools

Registration is required at:

www.whitebear.ce.eleyo.com

For information visit

www.isd624.org/communityservices

or call 651-407-7510.

Help Me Grow Early Childhood Information & Referral

Connecting families to early intervention services. Some children need extra help to learn and grow. Help Me Grow is a Minnesota state initiative that connects children with developmental delays and disabilities and their families to free, local early intervention services.

If you have a concern about a child's development, you can refer the child through Help Me Grow for a free screening or evaluation. Services are free to eligible children ages birth-5, regardless of income or immigrant status.

Help Me Grow's website, helpmegrowmn.org, offers valuable information to help parents and caregivers understand a child's development. Resources include developmental milestones, strategies to encourage development and information about referrals.

To refer a child, visit helpmegrowmn.org or call 651-604-3700. Interpretation services are available for referrals by phone.

Family Literacy

This multi-age class meets two days per week and is for families wanting to practice English. Parents and children attend together to improve their English language skills through conversation, learning activities, music, and more. An English/ESL teacher and an ECFE teacher teach the class together.

Birth to 5 (before kindergarten) Tue/Thu 12:30-3 pm NP \$25 per month: Sept 17 - May 15

LUS CEEB TOOM! Yog koj xav tau daim ntawv no txhais ua lus Hmoob, thov hu rau 651-653-3157.

ATENCIÓN: Si usted necesita hablar con una persona que hable español, por favor, llame al 651-653-3116.

ECFE Classes

ECFE Classes include Three Components:

Parent-Child Interaction

You and your child spend time together enjoying activities designed to enhance learning. You will leave with new ideas for things to do together at home.

Parent Education

Meet with other parents and a licensed ECFE teacher to discuss topics such as development, temperament, discipline, and getting ready for school. The parenting group time takes place in a separate room or in a designated area of the children's classroom for non-separating classes.

Children's Classroom

While you and other parents participate in parent education, children learn through play in a classroom with early childhood staff. Children will enjoy music, art, stories, large and small motor activities as they interact with other children.

Sibling Care

Ages 6 weeks-5 years

Sibling care is available for select classes. It is an optional service and is intended to provide safe, quality care for children while parents attend a class with another child. Children must be registered prior to class.

Cost: Fee D or E (*see back cover*)

Drop In Fee: \$10 an hour - with a 24 hour notice/reservation and if space is available.
Call 651-653-3100.

Infants

This class includes activities, songs, rhymes, movement, and parent discussion with a trained facilitator. You and your child will spend time together exploring toys and participating in classroom activities in a stimulating environment.

Ages Birth - 6 months

Mondays 9-10:30 am NP
Cost: Free

Ages 6 - 12 months

Mondays 11 am - 12:30 pm NP
Cost: Fee B (*see back cover*)

Ages Birth - 12 months

Mondays 5:45-7:00 pm NP
Cost: Fee B (*see back cover*)



Ones

Parent-child activities are planned for children ages 12-23 months. Discussion topics include child development, eating and sleeping routines, and parenting styles. Gradual parent/child separation will occur as the class and children's needs are met.

Age 1 by Sept. 1, 2019

Tuesdays 9-11 am NP
Thursdays 9-11 am NP
Cost: Fee A (*see back cover*)

ECFE Terrific Twos

Join us for this unique opportunity where we highlight the developmental milestones happening during this age, such as self regulation, independence, motor development, communication and language development. This class is a traditional ECFE class with parent and child time together and a gradual separation for a Parent Education component.

Ages 2-2.11 by Sept. 1, 2019

Tuesdays 9-11 am HU
Cost: Fee B (*see back cover*)

Multi-Age

Join families with children birth to five (before kindergarten) and participate in age appropriate activities. There will be a separate parenting time to learn about child development, handling tantrums and anger, toilet learning, and other topics. Gradual parent/child separation is flexible and can occur as the child's needs are met.

Birth to 5 by Sept. 1, 2019

Mondays 6-7:30 pm NP
Cost: Fee B (*see back cover*)
Tuesdays 9-11 am NP
Cost: Fee A (*see back cover*)

Older Toddlers & Young Preschoolers

Join other families with children who are two, three, and four years old. Parents will separate from their children to discuss topics such as temperament, child development, and preparing for preschool.

Ages 2-4 by Sept. 1, 2019

Thursdays 9-11 am NP
Cost: Fee A (*see back cover*)

Parent-Child Playschool

Ages 2-3 by Sept. 1, 2019

Playschool is an opportunity for children to become more comfortable and confident in a classroom setting, learn to follow rules, routines and directions, begin to initiate social interactions, and become an integral part of a group.

In the fall, children come to school with a parent/guardian and spend time in a traditional ECCE classroom gaining these skills and separating during parent time.

Starting the week of November 4, 2019 we will implement the second day as child-only. Children may attend the second day, Wednesday, as soon as they are 2.5 years old.

Mon/Wed 9-11 am NP

Mon is a parent/child day

Wed is child only starting Nov 4

Fee scale

Income	Class Fee
\$0-29,999	\$400
\$30-49,999	\$500
\$50-69,999	\$600
\$70-89,999	\$700
\$90,000+	\$800



Knee-High Nature

In this unique parent-child program, we explore, investigate, and unearth nature's secrets that lie beyond the classroom doors. Parents will have one-on-one time with their child(ren); indoors and outside. There will also be time for parents to meet with the ECCE teacher in a different room to discuss their child's learning and development. There will be specialty days when a Naturalist comes and leads intentional outdoor activities (i.e. cider pressing, snowshoeing).

Age 2.5 by Sept. 1, 2019

Mondays 9:15-11:15 am Tam

Wednesdays 9:15-11:15 am Tam

Cost: Fee C (see back cover)



Family Play Group

Parents and children explore classroom games, activities, circle time and open gym together. Infant siblings younger than 6 months are welcome in class at no charge. No parent separation.

Ages 0-5

New

Tuesday 6-7:30 pm HU

Fridays 9:30-11 am NP

Cost: Fee B (see back cover)

If you are interested in periodic drop-in for Family Play Group you must call 24-hours in advance to make a reservation.

Space is limited. Call 651-653-3100.

Drop-in is \$10 per time per family.

Young Explorers

Ages 2.5 - 3.11 years old by September 1, 2019

There is fun and learning as your child participates in these mini sessions. Children enjoy theme based classes where we work on age appropriate developmental skills while exploring new learning experiences.

Sign up for one or all the sessions. Parents are invited to join their child the last 30 minutes of the last class to view their creations and receive recipes/directions for the activities we've done. Children should be mostly bathroom independent with limited accidents.

Session 1: "Look What I Can Do!"

Sep 19-Oct 3 Thu 9-11 am
\$45 HU

In this class children will explore using different materials found in a classroom, scissors, glue bottles, paints, and writing utensils will be used each week. We will have fun playing games as we make new friends and practice being independent in a classroom setting.

Session 2: "Fall Harvest Fun"

Oct 24-Nov 7 Thu 9-11 am
\$45 HU

The season is changing and summer's bounty is ready to be picked. We will make a colorful fall collage with items from our nature walk, look at different seeds, and make a bird feeder to bring home.

Session 3: "Habitats and Hibernation"

Dec 5-Dec 19 Thu 9-11 am
\$45 HU

The animals in the forest are getting ready for winter. Learn about bears, squirrels, chipmunks, and other animals who hibernate for winter. We will explore their different habitats and how they hibernate during the cold winter months.

Preschool Classes

New Class

Grandparent(s) and Me Class

Non-Separating

Ages 2-5 by Sept. 1, 2019

This class provides a great opportunity for grandparents (or grand friends) to interact with their young learner and meet other grandparents in their community. Teachers will set up the classroom with intentional learning games and activities to enjoy together both inside and outside.

Fridays 9 - 11 am HU

Cost: \$150 for 12 weeks

Sept. 13th - Dec. 13

Join us at Marketfest

Our school principals, district administrators and Board members look forward to having terrific conversations with community members at Marketfest this summer.

Please be sure to stop by the district's booth Thursdays from June 13th through July 25th in Downtown White Bear Lake to receive a free pencil and Bear Paw temporary tattoo.

Thursdays, June 13 - July 25, 6 - 9 pm

Downtown White Bear Lake

Cost: FREE



White Bear Lake Area Preschool Program

Four star (highest possible rating) Parent Aware rated White Bear Lake Area Preschool provides a safe and nurturing environment for a child's first school experience away from home.

Age-appropriate activities provide a variety of meaningful hands-on learning experiences in literacy and math, science and social studies, art and sensory, music and dramatic play.

White Bear Lake Area Preschool practices are aligned with kindergarten entry expectations.

We are currently accepting registrations for our preschool sections for school year 2019-2020. Please reference the class options, age requirements, and a brief descriptions for each type of preschool below.

You may check online for class availability at

www.whitebear.ce.eleyo.com



3 Year Old Classes

Age 3 by Sept. 1, 2019

This preschool opportunity will allow children time to practice social skills as they begin to interact, cooperate, and develop their first friendships. Classroom activities will include a focus on turn-taking, sharing, playing games, pretend play, and small group learning.

4 Year Old Classes

Age 4 by Sept. 1, 2019

Classes are focused on helping children become independent learners and giving them the skills necessary to be successful in kindergarten. Curriculum is designed to address all areas of development and reinforce mastery of skills required for kindergarten readiness.

Nature Preschool

The program at Tamarack Nature Center revolves around nature, learning from it, about it and within it. Classes also include the development of pre-reading, writing, math, science, music and art skills with daily outdoor experiences. Children are immersed in rich activities that help them make meaningful connections to their classmates, teachers and the plants and animals that share their world. A Tamarack naturalist is an integral and collaborative member of the teaching team.

Tamarack Nature Center

5287 Otter Lake Road
White Bear Township

Tamarack has an outdoor Nature Play Area and Discovery Garden with daily nature exploration activities.

Summer Classes

Summer Preschool Playground

Preschool Playground is a fun and educational opportunity for children in a safe and supportive learning environment. Each day includes a variety of activities such as story time, games, arts and crafts, and supervised play on the playground at Birch Elementary. The Playground leaders are experienced and trained in working with preschool-aged children.

For children who turn 3 by Jan. 1, 2019; up through 5 years old and have not entered kindergarten.

Must have the ability to use the toilet independently.

Includes time for children to enjoy a non-refrigerated snack and beverage brought from home.

Questions? Call 651-653-3100.

	9:15-11:45 am	Birch Elem.
M/W	Jun 10-26	\$80
M-Th	Jun 10-27	\$150
Tu/Th	Jun 11-27	\$80
M/W	Jul 8-24	\$80
M-Th	Jul 8-25	\$150
Tu/Th	Jul 9-25	\$80



Kindergarten Jumpstart

Entering kindergarten fall of 2019

Kindergarten Jumpstart provides children the opportunity to experience what it is like to be in kindergarten. Children will spend time going on a treasure hunt, learning about bus safety, and actually taking a short bus ride. Registration deadline is one week before the first class meeting. Scholarships are available to qualifying families.

Questions? Call 651-653-3100.

9 - 11:30 am	M-Th	\$80
Jun. 17-20	Otter Elem.	
Jun. 24-27	Matoska Int'l.	
Jul. 8-11	Willow Elem.	
Jul. 15-18	Hugo Elem.	
Jul. 29-Aug 1	Lincoln Elem.	
Aug. 5-8	Lakeaires Elem.	
Aug. 12-15	Birch Elem.	

FREE CLASS

Blooming Babies

Ages 0-12 months

Delight and wonder at your infant's development during this parent-child class. Meet with other parents of infants and a licensed parent educator.

Tuesdays	Jul 9, 16, 23
9-10 am	HU



ECFE Summer Fun

Ages 1-5 years old

Parents and children can participate in classroom activities, games, circle time, music, water play and playground/gym time together. Join other families with young children and licensed ECCE staff.

Wednesdays	July 10, 17, 24
9-10:30 am	HU

Fee scale

Income	Class Fee
\$0-29,999	\$15
\$30-49,999	\$22
\$50-69,999	\$30
\$70-89,999	\$36
\$90,000+	\$42

Special Events

FREE

Baby Shower

You and your infant are invited to join us! You will meet our Early Childhood staff, receive free takeaways from our resource fair, take a tour of our facility, and enjoy some healthy snacks while meeting other new parents in the community.

Infants up to 9 months old

Tues., Oct. 15 9:30-11:30 am NP
Cost: Free



FREE CLASS

Do you know how much sleep your child gets? Does your child have problems sleeping? As a pediatric Sleep Medicine doctor with over 15 years of experience, I have been helping families better understand the importance of sleep. Creating proper sleep habits for a child will have life long benefits. Topics related to Sleep Hygiene, Behavioral Insomnia of Childhood, Snoring, Obstructive Sleep Apnea and the impact of light exposure from the smartphones and smart pads they use will be discussed.

Date: Nov. 7

Time: 6-7:30 pm

Cost: FREE

District Center - Room 112

4855 Bloom Ave,

White Bear Lake, MN 55110

Keith L. Cavanaugh,
MD, FAAP, FCCP
Children's Sleep Center
Children's Respiratory and
Critical Care Specialists, PA
St. Paul, MN



Field Trip

Fall Farm Fun at Pinehaven

Join us for a bus trip to the farm. We will take a trolley ride out to the Pumpkin fields and pick a pumpkin to bring home. Next, we will visit the animals on the farm. Children will get to pet a variety of sheep, goats, donkeys, cows, mini horses and even see the emu and peacocks. Afterwards families can explore the play sets, corn pits, and giant slide. Check in starts at Normandy Park Early Childhood Center at 8:45 a.m. Bus leaves at 9:00 a.m. and returns to Normandy Park at 12:30 p.m.. Bring a snack. This is a caregiver and child field trip. Fee is \$8.50 for everyone ages 1 and up. Registration is limited, event is rain or shine.

Mon., Oct. 14th 9 am to 12:30 pm

Normandy Park

Cost: \$8.50 per person
ages 1 and up



Sign Up for Classes All Year!

After the initial sign up, registrations are welcome at anytime.

Fees will be adjusted based on the date your family starts class.

Call 651-653-3100 for class availability or view openings at

www.whitebear.ce.eleyo.com

Parent Teacher Association (PTA)

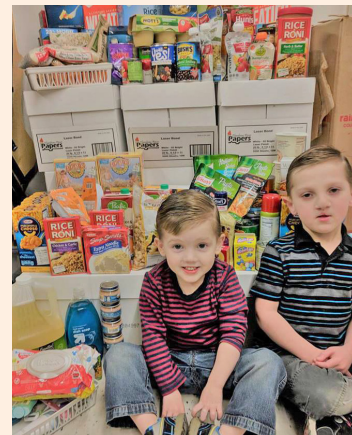
WE NEED YOU!!!

What is the Parent Teacher Association (PTA)?

Every Early Childhood program is required to have an advisory council that assists in the developing, planning, and monitoring of the ECFE program. The PTA consists of parents participating in the program, local community professionals, and agency representatives who can offer input and guidance on community needs.

- How Often are PTA meetings?
 - *Once a month on a Thursday evening from 6 - 7:30 pm at Normandy Park Education Center
- Is there childcare offered during meeting times?
 - *Yes, if you call 24 hours in advance early childhood staff are available to play with your children in our classrooms, gyms or outside.
- If I volunteer, do I need to attend every meeting or special event?
 - *NO! We need people who can do a variety of things: volunteer for part of a special event, prep event items at home, assist with gathering donations, put together materials/activities for events at home, assist with ideas /planning of PTA sponsored events, and give input on programming to leadership.
- What are the advantages of participating in PTA?
 - *Build your network of parents with similar aged children
 - *Give back to your community with your talents and time
 - *Program input based on the needs of the community
- Are there incentives for families to join PTA?
 - *YES!!
 - *If a parent/caregiver attends 2 PTA meetings a year and volunteers to help at 1 PTA sponsored event they will receive one of the following:
 - a. FREE registration for the following school year's preschool program
 - b. \$50 off your ECFE tuition for current school year
 - c. FREE year pass to Parent-Child Gym Time Wednesday nights

If you are interested in joining the PTA, please email us at wblearlychildhoodpta@gmail.com



White Bear Lake Area Schools
 Early Childhood Program
 Normandy Park Education Center
 2482 County Road F East
 White Bear Lake, MN 55110

Non-Profit
 Organization
 US Postage
 PAID
 Twin Cities, MN
 Permit No. 183

White Bear Lake Area Schools

Leading Minds to Learning, Hearts to
 Compassion and Lives to Community Service

You're invited to the 2019 Spring Event Let's Explore!!!

Come join us for a fun evening exploring the fabulous outdoor spaces at Tamarack Nature Center.

This is a great opportunity for your family to **explore outside together!**
 Come plant a seed, swing on a rope swing, walk on a slack line, paint with pine needles, build a fort, go on an adventure, roll down a hill, and meet an owl.

We'll be holding our annual Basket Raffle indoors.
 Tickets for the raffle are 1 ticket for \$1 or 6 tickets for \$5
 Admission is \$2 per family or a food shelf donation.

Tamarack Nature Center 5287 Otter Lake Road, 55110
 Thursday, May 9th, 6:00-7:30 pm

Come dressed for outdoor exploration, rain or shine!



White Bear Lake Area Schools
 Early Childhood Program
 PTA



Registration

Online www.whitebear.ce.eleyo.com

In Person

Normandy Park Education Center
 2482 County Road F East
 White Bear Lake, MN 55110

Cancellations

We reserve the right to cancel classes due to insufficient enrollment. Fees paid will be refunded. Refunds will not be issued for classes missed or after a class has started.

Determine Payment Due

Use the class fee schedule on page 5 to determine fee for the first child attending the class. Add half of the fee for each additional child from the same family attending the same class. Include any sibling care with the fee.

Payments

Payment is due at the time of registration. No family will be denied participation in classes due to inability to pay fees. To arrange payment plan call 651-653-3100.

Refund Policy

Refunds will be issued when requested at least five working days prior to the class starting date. A \$10 service charge will be deducted from each refund processed.

Immunization Records

Immunization records **MUST** accompany the registration if your child is participating in a parent-child class or sibling care. Class registrations will not be processed without an up-to-date immunization record each school year. Immunization records can be faxed directly from your clinic to 651-653-3155.

Sliding Fee Scale for ECFE Classes and Sibling Care (Full Year)

Gross Annual Household Income	Fee A 2 hr/wk class	Fee B 1.5-1.75 hr/wk class	Fee C Tamarack	Fee D 2 hr sibling care	Fee E 1.5 hr sibling care
\$100,000+	\$500	\$380	\$600	\$290	\$180
\$75,000-99,999	\$425	\$320	\$500	\$180	\$130
\$50,000-74,999	\$315	\$230	\$390	\$130	\$90
\$35,000-49,999	\$230	\$175	\$300	\$90	\$60
\$20,000-34,999	\$175	\$130	\$225	\$60	\$45
\$0-19,999	\$90	\$70	\$110	\$45	\$25

Please note the appropriate combined family income.
 This is your class fee for the school year.